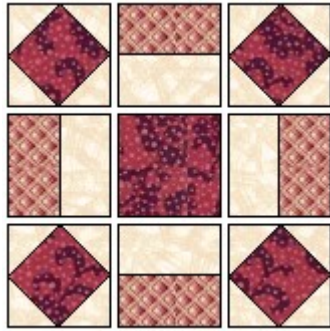
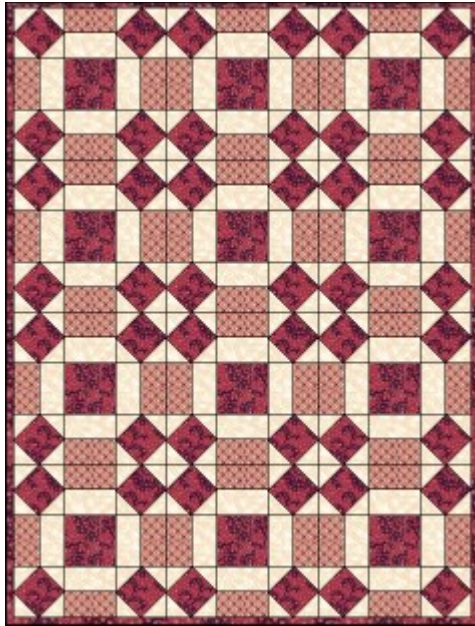


## Broken Wheel - Page 2



Piece the block by making rows, and then sewing rows together, alternating pressing directions by row, referring to the diagram for placement and direction of units...



Here's what the quilt would look like! :o)  
Pretty and Easy...what better combination??  
:o)

Happy Quilting!!

Marcia :o)

Here's one that Karin made! Karlene's!  
Ken's! Chaundra's! Jeanne's!

### \*\* Supplies List \*\*



Color 1 Color 1 needs: one strip 2-1/2" x 18"



Color 2 Color 2 needs: one strip 4-1/2" x 22-1/2"



Color 3 Color 3 needs: one strip 5" x 20" AND one strip 2-1/2" x 18"

To the Patterns or The Quilter's Cache

© Nov1999 Marcia  
Hohn



Page 1

Traditional Block

<http://www.quilterscache.com>